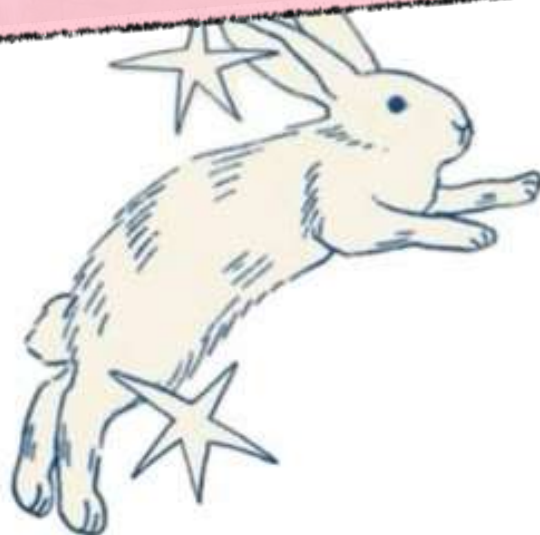


# OFFBEAT SPITI

Limited Edition | 8n/9d





# About The Place

Spiti Valley is a Himalayan desert mountain valley situated at an average height of 13,000 feet in the north-eastern part of the Indian state of Himachal Pradesh. Often regarded as a chunk of Tibet marooned in India, Spiti Valley is enigmatic and is interspersed with tiny hamlets and serene monasteries sitting precariously on mountain crags spread across its notched moonscape. The scattered villages comprise of whitewashed mud-brick homes amid rugged mountains and barley fields.





# Itinerary

- DAY 0** — Depart from Delhi to Shimla.
- DAY 1** — Shimla to Kalpa.
- DAY 2** — Kalpa to Gue Via Khab.
- DAY 3** — Gue to Demul via Dhankar.
- DAY 4** — Demul to Pin Valley.
- DAY 5** — Pin Valley to Rangrik via Key Monastery, Chicham Bridge.
- DAY 6** — Rangrik to Hikkim, Komic, Langza.
- DAY 7** — Rangrik to Nako via Tabo.
- DAY 8** — Nako to Sarahan.
- DAY 9** — Sarahan to Shimla | Delhi Drop.

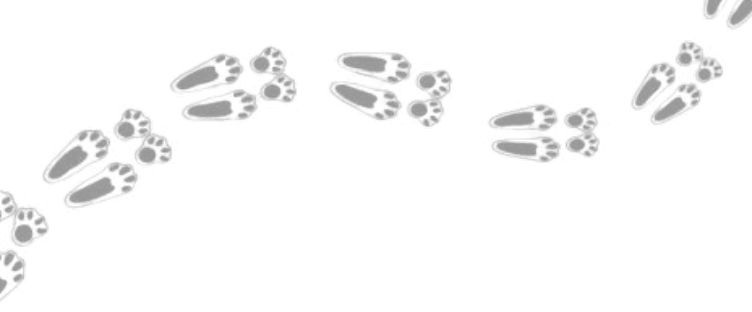




## DAY 1: *Shimla to Kalpa*

- Start from Shimla early morning.
- Enroute enjoy beautiful views of Kinnaur valley.
- Travel along Satluj river towards kalpa.
- Reach Kalpa by evening.
- Dinner and Overnight Stay.

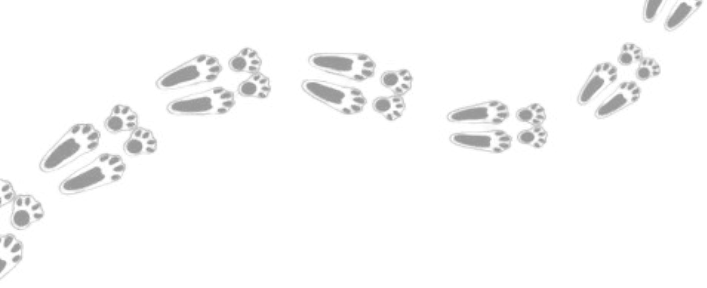




## DAY 2: *Kalpa to Gue via Khab*

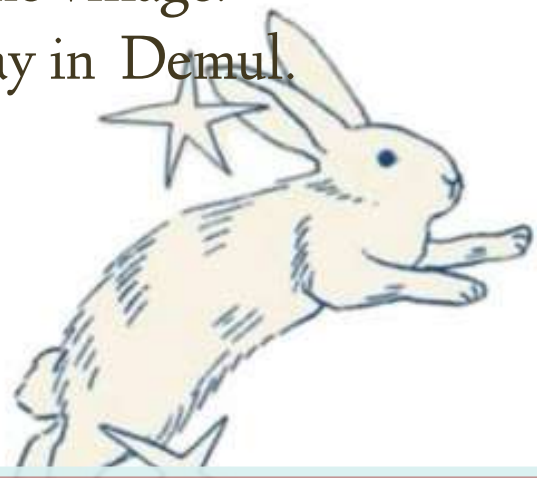
- Wake up early & have breakfast..
- Start your journey to Gue.
- Enroute Cover Khab (Confluence of Spiti and Satluj River).
- Enter Spiti valley from Sumbdo border.
- This night You'll experience local spitian homestay.
- Reach Gue by Evening, Dinner & Overnight Stay.

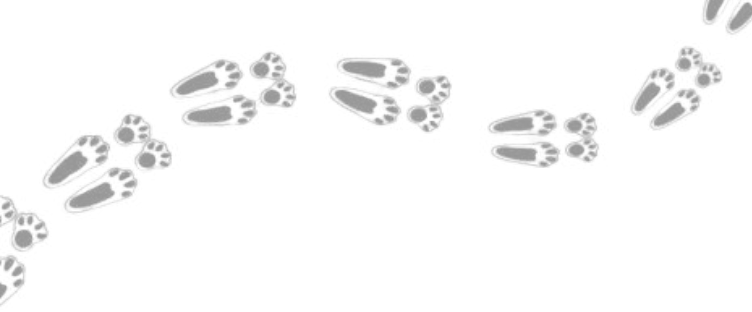




## DAY 3: *Gue to Demul via Dhankar.*

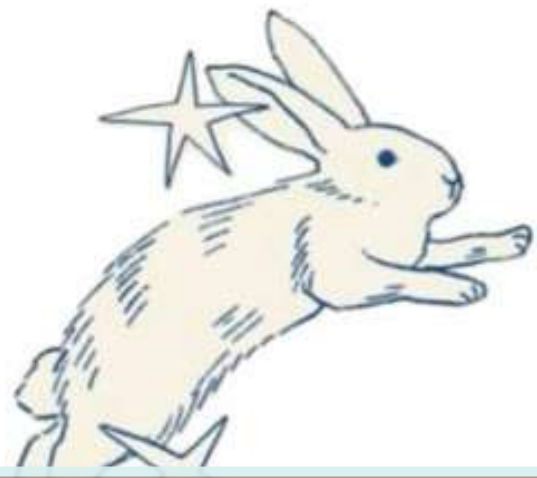
- After breakfast visit Gue Monastery.
- After that, Head for Demul (A surprising Village that still holds the roots of Spiti).
- Enroute cover Dhankar valley.
- You'll reach Demul by Evening, then you are free to roam around and enjoy the village.
- Dinner & Overnight Stay in Demul.





## DAY 4: *Demul to Pin valley.*

- Wake up and have breakfast.
- Depart for Pin Valley National Park.
- Enroute Visit Kungri Monastery.
- Dinner and Overnight Stay in Pin Valley.

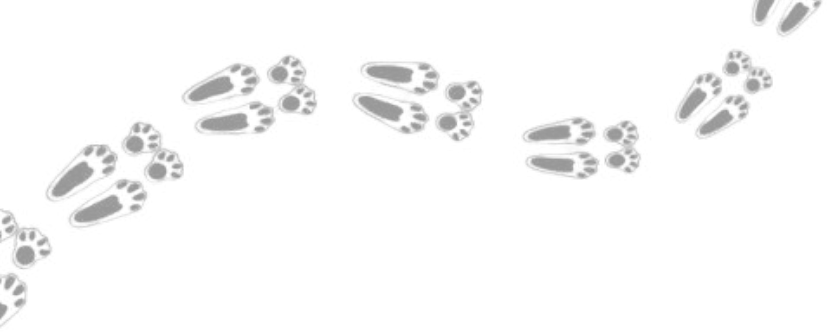




## DAY 5: *Pin valley to Rangrik.*

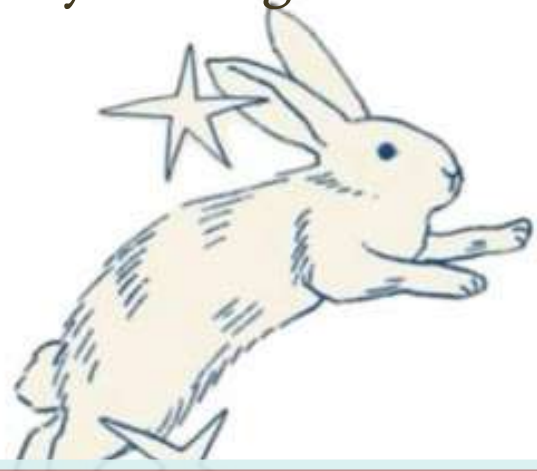
- Wake up and have breakfast.
- Depart for Rangrik.
- Enroute Cover Key Monastery (Largest Monastery) & Chicham Bridge (Asia's Highest Suspension Bridge).
- Dinner and Overnight Stay in Rangrik.

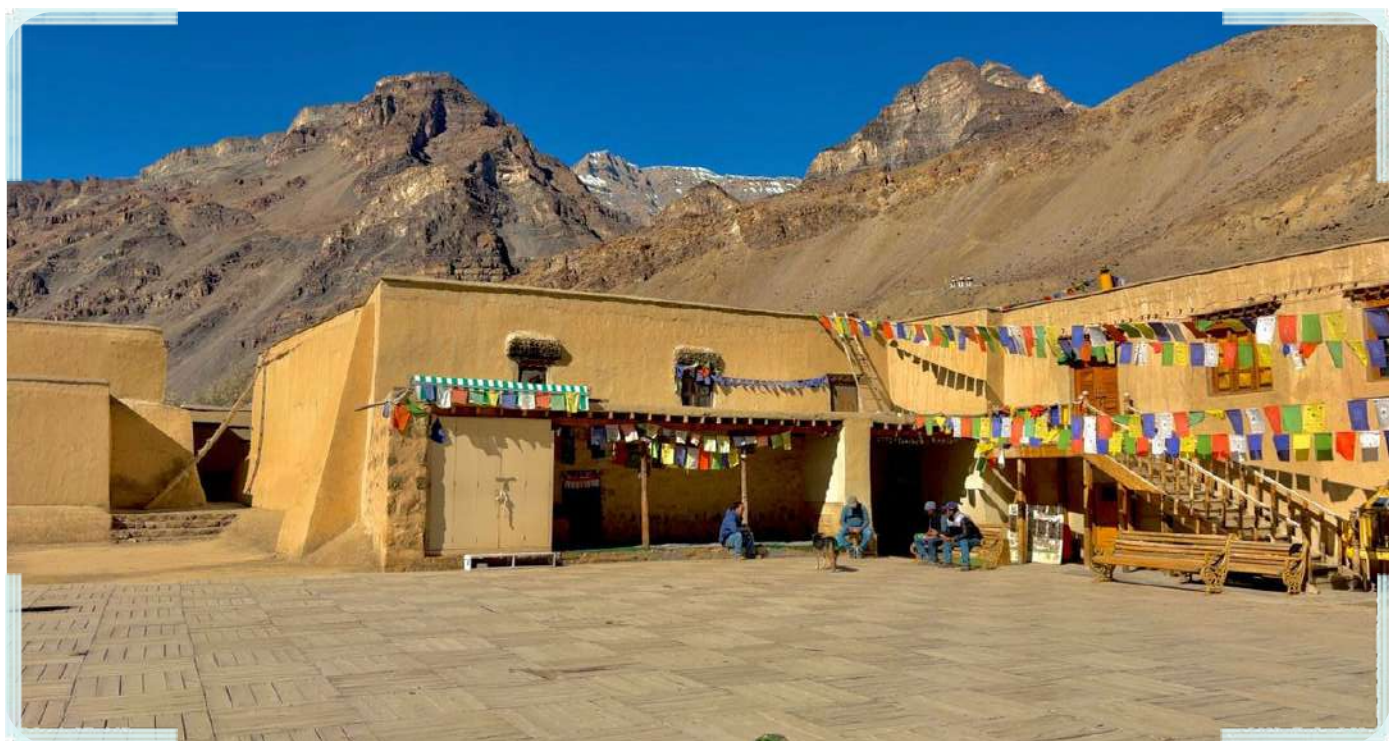
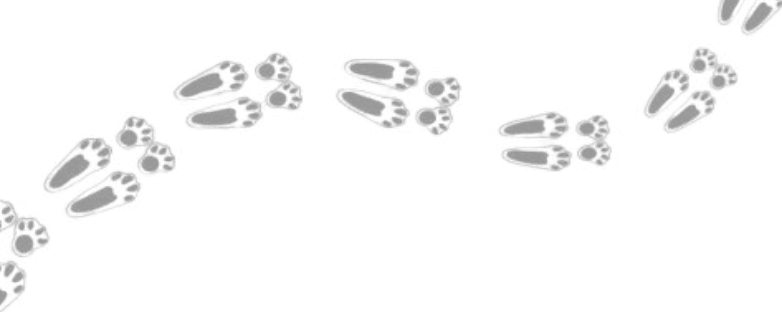




## DAY 6: *Hikkim, Komic, Langza*

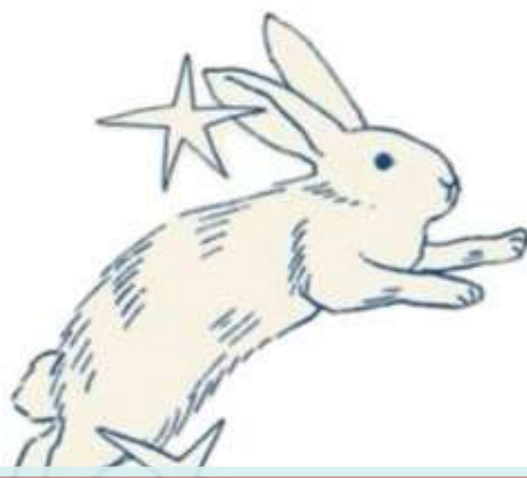
- Wake up and have breakfast.
- Depart for Local Sightseeing : Hikkim (World's Highest Post office), Komic (World's Highest Village.), Langza (Fossil Village of India).
- Dinner and Overnight Stay in Rangrik.





## DAY 7: *Rangrik to Nako.*

- Wake up and have breakfast.
- Depart for Nako.
- Enroute you will cover Tabo Monastery.
- Dinner and Overnight Stay in Nako.





## DAY 8: *Nako to Sarahan.*

- Wake up and have breakfast.
- Spent some time watching lake.
- Head to Sarahan.
- Dinner and Overnight Stay in Sarahan.

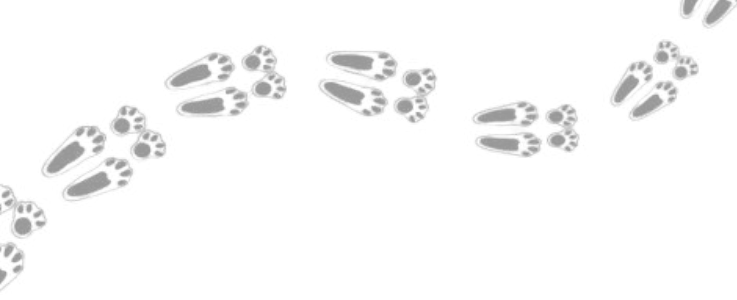




## DAY 9: *Sarahan to Shimla Drop.*

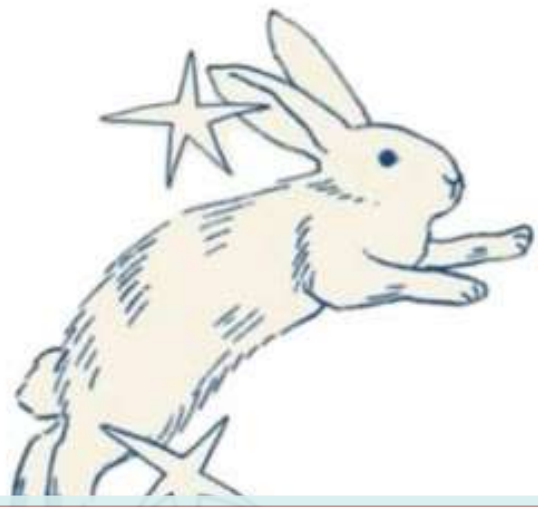
- Wake up and have breakfast.
- Visit Bhimakali Temple.
- Head for Shimla.
- Here Your journey is coming to an end, enjoy the last momens of your adventure.
- Reach Shimla by evening.





# INCLUSIONS:

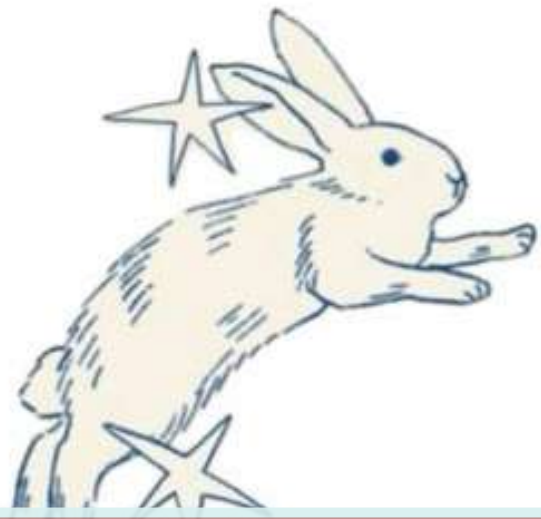
- ✓ Entire Travel as per the itinerary in Tempo Traveller/Volvo.
- ✓ 16 meals will be provided throughout the trip, 1 meal on Day 1+ 2 meals on Day 2 + 2 meals on Day 3 + 2 meals on Day 4 + 2 meals for Day 5 + 2 meals on Day 6 + 2 meal on Day 7+ 2 meals on Day 8 + 1 meal on Day 9.
- ✓ Accommodation for 1 night in Kalpa, 1 night in Gue, 2 nights in Rangrik, 1 night in Demul, 1 night in Pin, 1 night in Nako, 1 night in Sarahan.
- ✓ Driver charges, toll tax and all inner line permits.

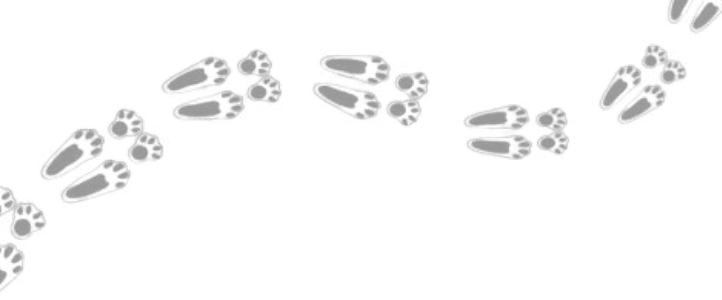




# EXCLUSIONS:

- ✘ Any other Food and Beverage charge that is not included in the package.
- ✘ Any permit or entry tickets to viewpoints.
- ✘ Anything not mentioned in the inclusions Columns.
- ✘ Any cost arising out of unforeseen circumstances above medical emergencies and acts of Gods.





# NOTES:

Numerous factors such as weather, road conditions, the physical ability of participants etc. May cause itinerary change. We reserve the rights to change any schedule in the interest of safety, comfort and general wellbeing.

The age limit of our group departures is 16 to 42 years due to power packed itineraries that we provide to our travellers. We can customise trips for travellers beyond the mentioned age bracket.

Kindly note that in the event of any act of God, such as heavy snowfall leading to road closures for heavy vehicles, it will be responsibility of the travelers to arrange for a 4x4 vehicles and the cost have to be borne by the travelers themselves. Bunny Trails bear no responsibility for any such act of god or expense.

